

Atlas Hotels
in **SAN DIEGO**

FIVE LUXURY HOTELS
WITH COMPLETE CONVENTION FACILITIES

1000 BEST ADDRESS ROOMS

on HOTEL CIRCLE in MISSION VALLEY

Town and Country HOTEL
22 HOSPITABLE ACRES 298-7131

Mission Valley Inn
FASHIONABLE FUN SPOT 298-8281

Kings Inn
INFORMAL LUXURY 297-2231

HANALEI HOTEL
A POLYNESIAN PARADISE 297-1101

just off HOTEL CIRCLE in OLD TOWN

Padre Trail Inn

4200 TAYLOR ST. IN OLD TOWN 297-3291

USE FREE PHONE AT HOTEL RESERVATION CENTER IN SAN DIEGO AIRPORT - DIAL ATLAS HOTELS FOR RESERVATIONS. MOBILE PICKUP AT AIRPORT ENTRANCE ON THE HOUR.

LOS ANGELES
in **VAN NUYS**

on San Diego Freeway at Sepulveda and Burbank Blvds.

CARRIAGE INN

5525 SEPULVEDA BLVD. 787-2300

ATLAS HOTELS
- FINE RESTAURANTS - COCKTAIL LOUNGES
- AIRCONDITIONED
- COMPLETE HOTEL SERVICES

PSA FETES MILLIONTH PASSENGER FOR 1969

Early last month, an Encino man became the one millionth passenger to fly PSA in 1969 and the occasion was celebrated with gifts.

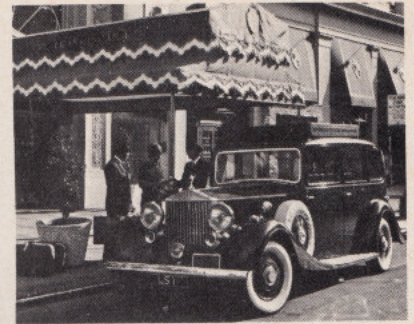
Anton G. Roland was informed that he was the milestone passenger after he had checked-in for a San Francisco flight at Hollywood/Burbank Airport. Gifts included a five-foot-tall Easter bunny clad in a PSA baseball cap and T-shirt, and two complimentary round-trip PSA tickets. DeWayne Blankenship, PSA District Sales Manager, and Ken Hodges, PSA Station Manager at Hollywood/Burbank, presented the gifts.

In San Francisco, the millionth passenger was greeted by PSA Vice President Robert Crandall and presented a large Easter basket containing a bottle of California champagne.

Hollywood/Burbank Airport, then Lockheed Air Terminal, was the first stop on PSA's maiden flight. A leased DC-3 took off from San Diego on May 6, 1949, landed in Burbank and then continued on to Oakland. Today, PSA flies company-owned Boeing 727, 737 and DC-9 jetliners on over 900 flights a week to eight metropolitan centers within the State of California. □



DeWayne Blankenship, PSA District Sales Manager, Hollywood/Burbank, presents an Easter bunny and two round-trip air passes to Anton G. Roland, Encino, the one millionth passenger to fly PSA in 1969.



San Francisco's elegant hostelry for the harried businessman . . .

SAN FRANCISCAN HOTEL
MARKET AT CIVIC CENTER

WE pick you up at the downtown Airline Terminal in our courtesy Rolls-Royce limousine (just phone us). We gentle you into a big comfortable room with thick soundproof walls (heavenly quiet). We surreptitiously fill your ice bucket for free without being asked. We can also fetch you spirits from the lobby shop at regular prices. (Already you begin to feel better).

We pamper you with a brand-new Serta deluxe extra-length bed, plus extra pillows, extra blankets, extra luggage racks, extra hangers. In the bath there's an oversized adjustable shower head, oversized soap and towels. There's even a free survival kit of aspirin and bromo (in case of an oversized head).

We soothe you to sleep with your own wide-screen TV or your own selected bedtime story. (Each room has a small library of current novels; you can even take one along as our gift.) Comes morning, we send you a complimentary newspaper with your continental breakfast-in-bed.

There's meeting-room space (including executive suites at day rates), steno service, in-hotel printing service, same-day laundry-valet, rent-a-cars, and easy in-out parking next door.

When you check-out, we accept any major credit card for ID and bill your company direct (no cash needed). Then we waft you back to the Airline Terminal in our elegant Rolls-Royce.

What a hotel!

For instant reservations, just TELEX us direct (34-0655) or phone these numbers in your city:

In Los Angeles . . . (213) 627-4949
In San Diego . . . (714) 234-3446
In Portland . . . (503) 226-2873
In Seattle . . . (206) 623-6595

PHILIP DRAGNER, General Manager

MARKET AT CIVIC CENTER
PHONE (415) 626-8000

SAN FRANCISCO
TELEX 34-0655



**"BOEING 737"
TELEPHONE GIVEN TO
PSA PRESIDENT**

A personal telephone engineered into a model of a Boeing 737 airplane was presented to PSA President, J. Floyd Andrews, by William R. Sprouse, Jr., General Manager of Prophet Foods Company of Burbank. The gift commemorates the spirit of cooperation between the two companies.

The top of the phone acts as the roof of the cabin fuselage. All details of the PSA jetliner are exact. The dialing mechanism is located in the telephone instrument.

Custom Print Shop

1759 North Las Palmas Ave.



Hollywood, California 90028

Professional Photographic Laboratories

Telephone 464-0215

**going to
san francisco?**



*Hotel
Shaw*

market at mc allister

- Next to Civic Center
- 1/2 block from Greyhound (Direct to Airport)
- Near theatres, shops, restaurants
- Coffee Shop—Cocktail Lounge
- Singles \$8-10—Doubles \$10-12

RESERVATIONS: (415) 626-5200

san jose anyone?

Just 5 minutes from airport

san jose inn

- Country Club Atmosphere
- Coffee Shop—Dining Room
- Convention Facilities
- Pool—Garden Patio

RESERVATIONS: (408) 293-9361



GROWING WITH CALIFORNIA

**SAN DIEGO'S
"INN" HOTEL**

Le Baron, San Diego's newest and largest hotel. Each of our 450 rooms has a direct dial phone, radio and TV. In the famous Hotel Circle, Le Baron has convention and meeting facilities that accommodate up to 600, dancing and entertainment nightly in the V.I.P. Lounge and superb dining in The Regency Room.



250 Hotel Circle/
Where U.S. 395
crosses Interstate 8
Mission Valley
San Diego,
California 92110
Telephone
(714) 291-1777

On July 7th

**A NEW MEASURE OF HOTEL LUXURY
OPENS AT THE SAN FRANCISCO AIRPORT**

The new Le Baron introduces a new tradition in hotel luxury. Each of our 340 rooms provide: Color TV and AM-FM Radio, Direct Dial Telephones, Complete Soundproofing, and oversized beds.

For conventions, banquets and meetings, Le Baron can accommodate up to 1,500.

Exclusive for Top-Level Travelers!

Le Baron Penthouse featuring rooms with your own butler service

24 hours a day.
Reasonable rates.



1380 Bayshore
Highway,
Burlingame,
California 94010
Telephone
(415) 347-5444